



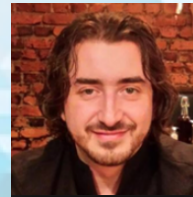
Software Center



# Software Center

## Managing Architectural Technical Debt

**Terese Besker, Antonio Martini and Jan Bosch  
(Saulo Soares de Toledo)**



Software Center  
Chalmers University of Technology  
Gothenburg, Sweden.

University of Oslo, Norway

[www.software-center.se](http://www.software-center.se)

# Previous work

- A lot of results over several sprints!
  - CAFFEA model (organization)
  - AnaConDebt (tool to assess and visualize TD)
  - Maturity model for tracking TD
  - Harmfulness of Technical Debt
  - Impact of Technical Debt on morale
  - Technical Debt in Safety Critical System
- Contact us for more information:
  - Antonio Martini [antonima@ifi.uio.no](mailto:antonima@ifi.uio.no)
  - Terese Besker [besker@chalmers.se](mailto:besker@chalmers.se)

# New study: Process Debt

- Like Technical Debt, but involves processes
- Early results from Norwegian study\*
- Generates a lot of coordination to discuss and fix it
- *“a sub-optimal activity or process that might have short-term benefits, but generates a negative impact in the medium-long term”*
- Planned to do interviews next sprint, join next sprint!

\* Martini, Stray, Moe: Technical-, Social- and Process Debt in Large Scale Agile, XP Workshop

# Process Debt Examples

- Example: meeting preparation and effectiveness
  - Save time by not preparing the meetings
  - Too many participants, wasted time, culture of “not attending useless meetings”
- Example: lack of demo sessions during development
  - Demo sessions are skipped to save time
  - Missed feedback
- Other examples (also observed in SC companies)
  - Slow down of planning and prioritization phase
  - Slow down of release phase



# Technical debt in AI/ML

- Technical Debt exists in ML and AI applications
  - New kind of applications
- We want to understand what TD is the most dangerous
  - Participants:
    - Ericsson
    - Bosch
    - Peltarion
    - Other companies
    - Join us in the next sprint!